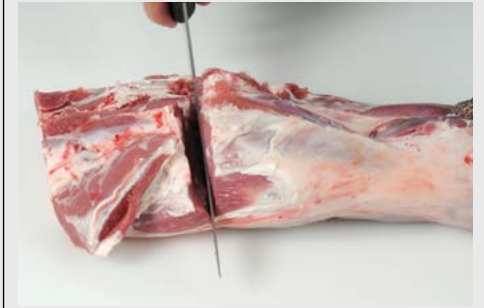
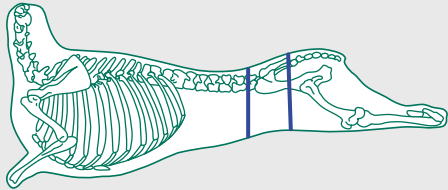


Lamb Rump Pavé

Code:
Leg L036



1. Position of the rump.

2. Remove aitch, back and tailbones.

3. Remove the topside muscle by following the natural seams.

4. The rump of lamb is removed squarely from the leg.



5. Remove excess gristle

6. Fat thickness not to exceed 5mm.

7. Cut in half to create 2 Pavés.

8. Lamb Rump Pavé.

